

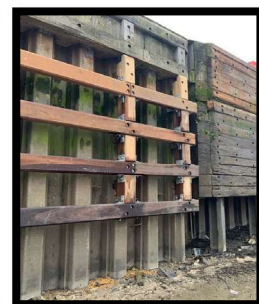
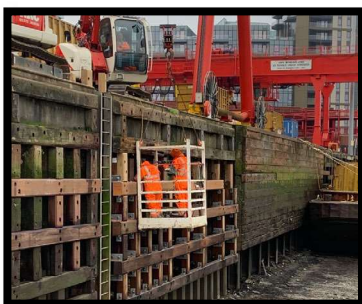
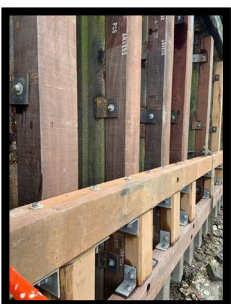
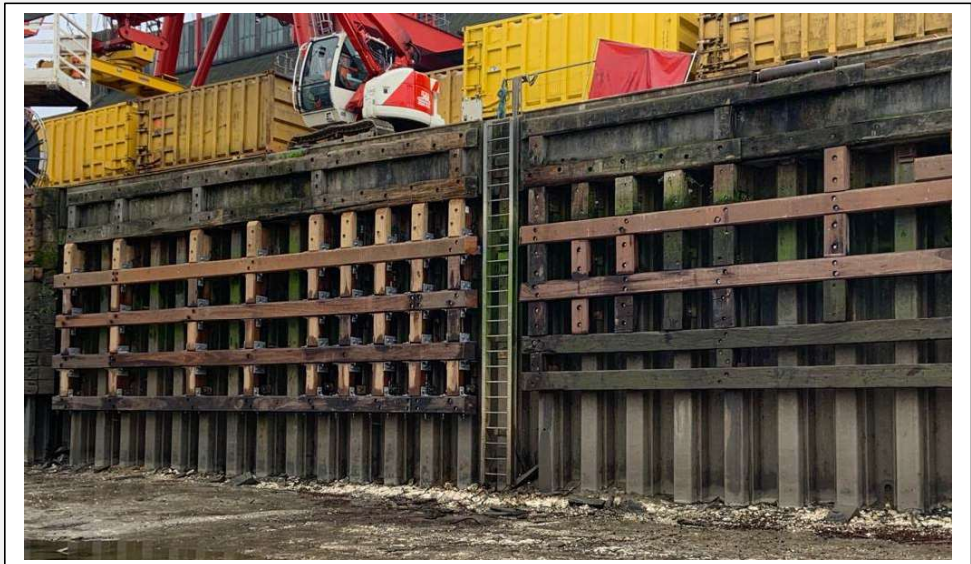
Western Riverside and Walbrook Wharf Fendering and Campshed Works

GPS Marine Contractors Ltd. has successfully completed three separate contracts rolled into one for the fendering and campshed works for Cory Riverside Energy at two of their London River Thames sites.

*Using High quality 'Ekki'
Hard wood sourced from
our FSC approved supplier
to provide a long lasting
quayside protection*

Western Riverside

At the Western Riverside site GPSMCL completed the strip down and replacement fendering of 6 of the 10 primary fender panels to the existing wharf. Carrying out the works, whilst Cory continued with their own business activities, GPSMCL worked closely with the client to ensure an uninterrupted safe interface between the two operations.

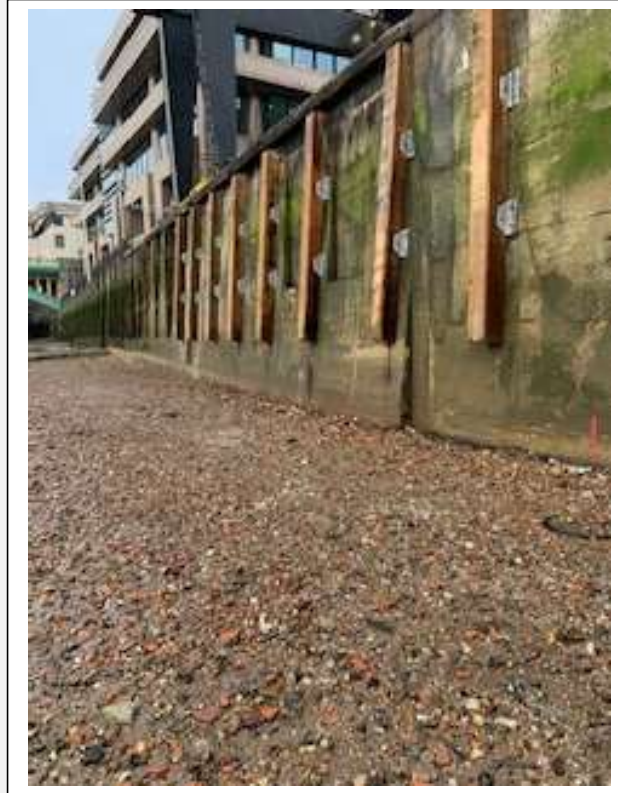


Walbrook Wharf

*Campshed capping beam,
Custom made to fit using
'Ekki' Hardwood*



At Walbrook Wharf the replacement fendering and campshed regrading works were completed in two 4 day long weekend possessions working over the low water periods. The works at both sites were completed to the agreed programme and to budget, with zero accidents or incidents.



*Campshed reprofiled, along
with installation of new
'Greenheart' vertical timber
fenders*



Additionally, all works were carried out under a PLA river works licence applied for and gained by GPSMCL on behalf of Cory as the client